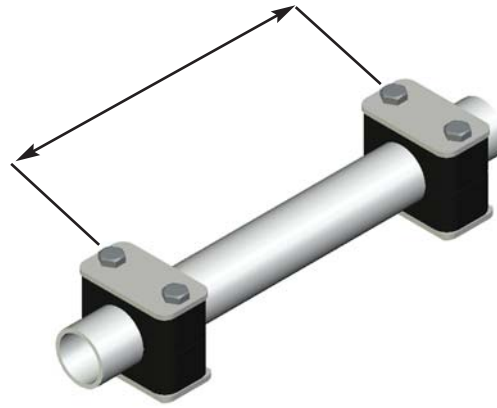


Recommended Spacing



Recommended Spacing

Pipe or Tube OD	Operating Pressure	Recommended Spacing	Operating Pressure	Recommended Spacing
0.250 in. to 0.675 in.	up to 3000 psi	5 - 7 Ft.	over 3000 psi	3 - 5 Ft.
0.750 in. to 1.050 in.	up to 3000 psi	6 - 8 Ft.	over 3000 psi	4 - 6 Ft.
1.125 in. to 1.500 in.	up to 3000 psi	7 - 9 Ft.	over 3000 psi	5 - 7 Ft.
1.750 in. to 2.500 in.	up to 3000 psi	8 - 10 Ft.	over 3000 psi	6 - 8 Ft.
2.750 in. to 3.500 in.	up to 3000 psi	9 - 11 Ft.	over 3000 psi	7 - 9 Ft.
4.000 in. to 4.500 in.	up to 3000 psi	10 - 12 Ft.	over 3000 psi	8 - 10 Ft.
5.563 in. to 6.625 in.	up to 3000 psi	11 - 13 Ft.	over 3000 psi	8 - 11 Ft.
6.625 in. to 8.625 in.	up to 3000 psi	12 - 14 Ft.	over 3000 psi	9 - 11 Ft.
10.750 in. to 12.750 in.	up to 3000 psi	13 - 15 Ft.	over 3000 psi	8 - 10 Ft.
13.750 in. to 19.750 in.	up to 3000 psi	14 - 16 Ft.	over 3000 psi	10 - 12 Ft.

Recommended Mounting Practices

Bends

Behringer recommends that all pipe bends be supported by clamps placed as close to the bend as possible. The clamps should be directly after the connection (coupler, threaded connector, flange, or other).



Components

Behringer recommends that all system components be supported by a clamp directly before and after the component in order to protect against vibrations and shock. Clamps should be located as close to the component as possible.

